

# Concept Seal v1



## PIONEER COVERED WAGON

The covered wagon represents Oregon's history as being the end of the Oregon trail.

## MOUNT HOOD

Mount Hood is an important symbol of Clackamas County and core part of county tourism.

## CHINOOK WOMAN

The Clackamas Tribe is part of the greater Upper Chinook peoples, they are an important part of the history of the county.

## GROUPS OF DUGLAS FIR

The Douglas fir represents Oregon, and Clackamas County's timber industry.

## THE CLACKAMAS RIVER

The Clackamas River is a vital river that is important to Clackamas County.

## CHINOOK PATTERNS

These lines are based off of traditional Chinook Patterns seen in photos on clothing.

1843  
STATE OF OREGON  
ALIS VOLAT PROPRIIS

# Concept Seal v2

## THICK FOREST

This thick forested area represents the large national forest that makes up much of Clackamas County.

## PIONEER COVERED WAGON

The covered wagon represents Oregon's history as being the end of the oregon trail.

## THE CLACKAMAS RIVER

These waving lines represent the Clackamas River, a historically vital artery for the cities of Clackamas



## CHINOOK WOMAN

The Clackamas Tribe is part of the greater Upper Chinook peoples, they are an important part of the history of the county.

## MOUNT HOOD

Mount Hood is an important symbol of Clackamas County and core part of county tourism.

## SALMON

The salmon is a common fish throughout the rivers of Oregon, including the Clackamas river

## CHINOOK PATTERNS

These lines are based off of traditional Chinook Patterns seen in photos on clothing.

# Concept Seal v3

## FOUR STARS

The four stars represent the the first four counties in the oregon territory, Clackamas, Marion, Washington, and Yamhill.

## PIONEER COVERED WAGON

The covered wagon represents oregon's history as being the end of the oregon trail.

## WHEAT BUNDLE

The wheat bundle calls back to the first seal of oregon, the Salmon Seal. It represents the counties historial agricultrual industry.

## THE CLACKAMAS RIVER

These waving lines represent the Clackamas River, a historically vital artery for the cities of Clackamas.



## THICK FOREST

This thick forested area represents the large national forest that makes up much of Clackamas County.

## STARS

These stars don't represent anything, I just thought that they looked neat.

## SALMON

The salmon is a common fish throughout the rivers of Oregon, including the Clackamas river.

## CHINOOK WOMAN

The Clackamas Tribe is part of the greater Upper Chinook peoples, They are an important part of the history of the county.

These color variations apply colors not just to the outside ring with text, it also applies a sunset in the central section, as well as colors to the surrounding sections

# Concept Seal v3

## Color Variations



Gold, Green, and White



White, Gold, and Black



Green and White



Blue, Gold, and White



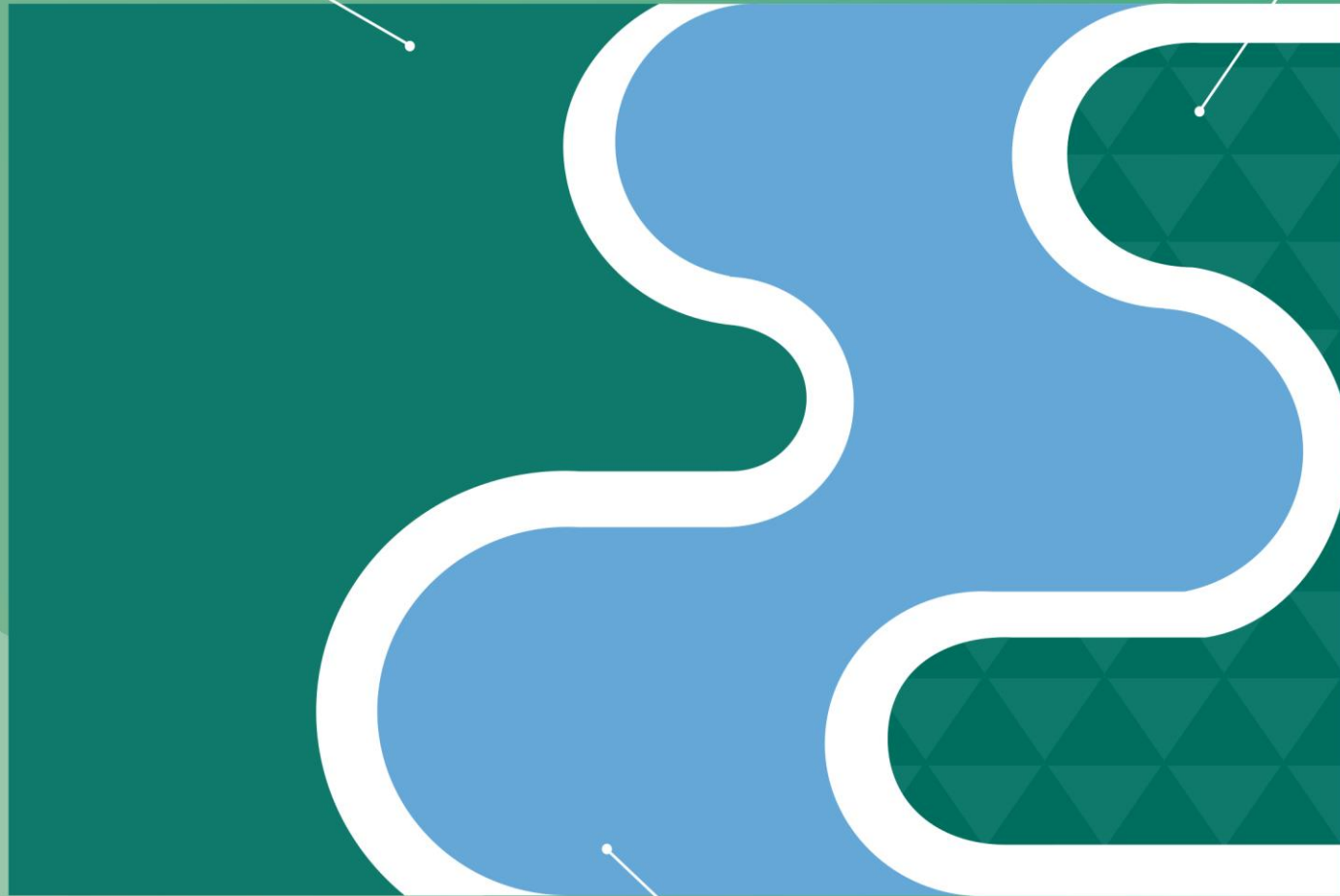
Black and White

\* These color variations could possibly be applied to any of the other versions.

# Concept Flag

The field of green represents the center of the Willamette Valley

The Green triangles represent the Mount Hood national forest, as well as the mountains of the cascade range



The blue wave represents the Clackamas River