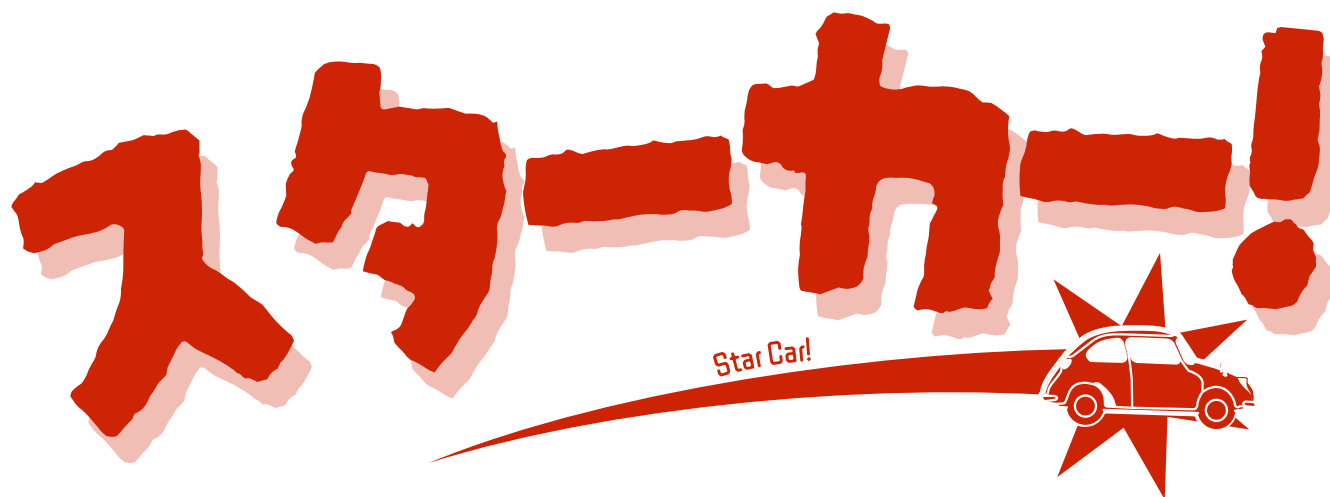


Issue No. 1

1985 Subaru XT Turbo  
Andromeda

## プレアデス姉妹のプレゼント

Pleiades Sisters Present



<http://www.lamamelle.com/psg> ✦ Pleiades Sisters Garage 2025 ✦ Photography by LalMamelle ✦ Inspired by Retro Tengoku

This magazine and article was produced without any association with the Subaru Corporation. All Subaru logos and promotional images used in this magazine were produced by Subaru and are the owners of set graphics and images. This magazine was no created for profit. Please don't sue me.



## Car History

# 車の歴史

The Subaru Alcyone truly takes from its namesake. When it first started rolled off the Yajima Plant in Ota in 1985, it was the brightest star in Subaru's line-up. It's "Folded paper" design style, lead it to have the lowest drag coefficient of any car in the United States in 1985. Which also lead to an extremely striking design, that many people called unusual, but still very jazzy. It was most certainly a product of the 80s.

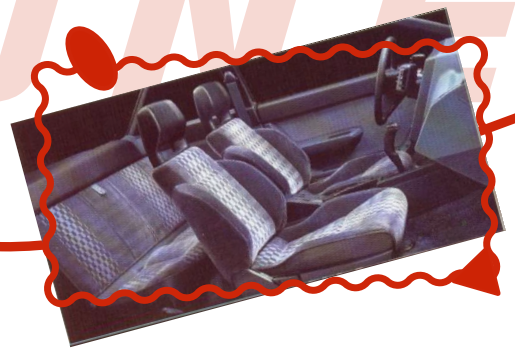
The Alcyone went by many names, just like its sister's the Leone and the Brat. In Japan it was known as the Alcyone, or the Alcyone XT. However, in the states or Europe it was known as the XT, but in Australia and New Zealand, it was known as the Vortex. This makes it somewhat confusing to talk about in online forums.

The goal of the XT was to show that Subaru, or Fuji Heavy Industries at the time, was at the forefront of innovation and style. In Like the other Subaru models at the time, it (generally) had three trim levels, DL, GL, and GL-10. The base model DL had the standard 1.8L EA-82 Boxer Engine, with multi-point fuel injection, and a 5 speed manual transmission as standard. The GL came with the same engine, however, more options in the field of tech. It included features like a more detailed gauge cluster, pneumatic suspension, and a trip computer. It also had the option for a 3 speed automatic transmission. The GL-10 was the cream of the crop for the XT. It included, as standard, the EA-82T, T standing for Turbo. While the turbo was somewhat small, it gave it just enough power to make the car really go. It also included "on-demand" four-wheel drive as standard, unlike the other trims which were only front wheel drive. While it couldn't take any rough off roading, one could easily tackle rough roads, or wet/snow conditions. It also came with a digital LCD display for the gauge cluster, which Subaru dubbed, the "Digi-Dash".

In 1987, the Alcyone received a face-lift. Along with some other improvements, another trim level was added, the XT6. This model contained a new engine, the 2.7L ER-27, which was a non-turbocharged 6-cylinder engine, unlike the previous 4-cylinder EA engines. This was Subaru's first H6 engine, and added a dramatic boost in power compared to the older engines.

While the car was generally considered to be cool, it was never very popular. It sold somewhat decently, with around 99,000 cars being produced, but it did little to boost Subaru's sales. In late 80s, it began to focus on its core audience with the Legacy, a more standard series of cars which is where Subaru truly began its leap into popularity. The XT was last produced in 1991, and was replaced by a namesake successor, the Alcyone SVX for a number of years.

While it never defined the 80s, it most certainly took the definition and ran with it. It implemented many features we now think of as standard. A digital display, four-wheel drive, controls on or near the steering wheel, a computer to gauge trip distance and an ETA, and more! It was Subaru's first attempt at a sport's car like vehicle, without it, we would never have the WRX, or the BRZ. It was a forerunner for Subaru, and it was a damn cool one.



Driver Interview

# ドライバーインタビュー

Driver: Phillip King



Why did you decide to get this car, instead of a 2006 Toyota Corolla (something more modern)?

Well, I already had a 1988 Subaru Leone, so modern has already been out the window with me for a long time. I felt like she needed a friend, someone from her time so I when I saw her just rotting away in a drive way, I knew she was the one.



What's some of the work you've put into the car so far?

So far only basic mechanical stuff. Got the car to start after sitting for 13 years, when fixed the suspension, and a bunch of little stuff. Eventually I want to fix the interior, sun roof, whatever that ticking coming from the engine is, and repaint the whole car.



How does the car make you feel when driving?

Fast. Even after sitting for a decade and having, honestly minimal work done to her, she still wants to ZOOM. I can feel her asking me to speed up on the highway, but my fear of her falling apart doing 80 is what keeps me from speeding.



# 車のインタビュー

Car Interview

Car: Andromeda (Allie)



How did you feel when your driver picked you up?

I had been sitting in the same driveway for... such long time. I don't even know how long! I excited but was honestly just hoping this kid wasn't using me for parts, I still had some life in me! I tried to tell them, and I think they got the message.



What are some improvements you wish you had?

I want my air suspension back! It was, like, my coolest feature! Imagine if you were one of those Olympic pole jumping people and someone took your legs and replaced them with some dead guys legs. Uncool >:(. Also, I want my paint fixed, how am I going to impress the ladies with a rusting driver side door.



If you could tell you driver one thing, what would it be?

Speed limits are more like speed suggestions my guy, you can absolutely go 80 in a 45. Also uh, thanks for not leaving me in the drive way I guess, at least the garage is pretty cozy. And also, driving me around to places.





STAR PHOTOS!

スターの写真!

Spec Check!

スタープレイアデス



Did you Know?  
The XT's Japanese name,  
the "Alcyone" is one of  
the Stars in the Pleiades  
Star Cluster?

# Exterior

# 外觀

BODY	WHEELS
Rough Paint (Factory) A couple of dents	Boring-ish Factory 4x140 Wheels Grid Hubcaps (3/4)
LIGHTING	SUSPENTION
Pop-up Friggin Headlights (Halogen Bulbs) Bosch Pilot Floodlights  <i>None of that LED Crap! :-( -Andromeda</i>	Coil and Struts from a 86' Leone (Damaged Air suspension, will be fixed...)

*Removable Sunroof!*

*Pop-up  
Headlights*

*Grid Style  
Hubcaps*

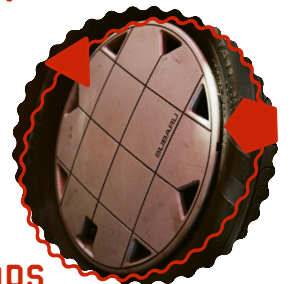


Rear



Front(Lights up)

*Bosch  
Floodlights*



Hubcaps

<b>WHEEL + SHIFTER</b>	<b>CONTROLS</b>
Weird-ass (but cool) 80s Steering Wheel Flight Stick Style Shifter W/ 4WD Button	LCD Digital Dash (Tach. and Speedo) Wing Pods for Lighting and Climate Controls Trip Computer (Working!)
<b>SEATS</b>	<b>MISC</b>
Stock Checkered Pattern fabric seats	Cracked Dash lol Original Floor Mats!

Inside

# 内部



Engine

# 原動力



## Ever Wonder What 13 y.o. Gas Looks Like?

No this isn't some kinda "roadside emergency". The Alcyone had been sitting in the previous owners drive way for at least 13 years, with about a quarter of a tank of gas. After all that time, the gas had serious oxidized, and rusted the tank. Remember kids, if you let is sit it will turn to... rust...

## ENGINE SPECS

EA-82T Engine (US version)

Valvetrain: Single Overhead Camshaft; Multi-Point Fuel Ejection

Compression Ratio: 7.7:1

Horsepower: 111-115hp (Some horses may have left the stables...)

Toque: 134 lb-ft

Equipped with:  
Air Conditioning  
Power Steering

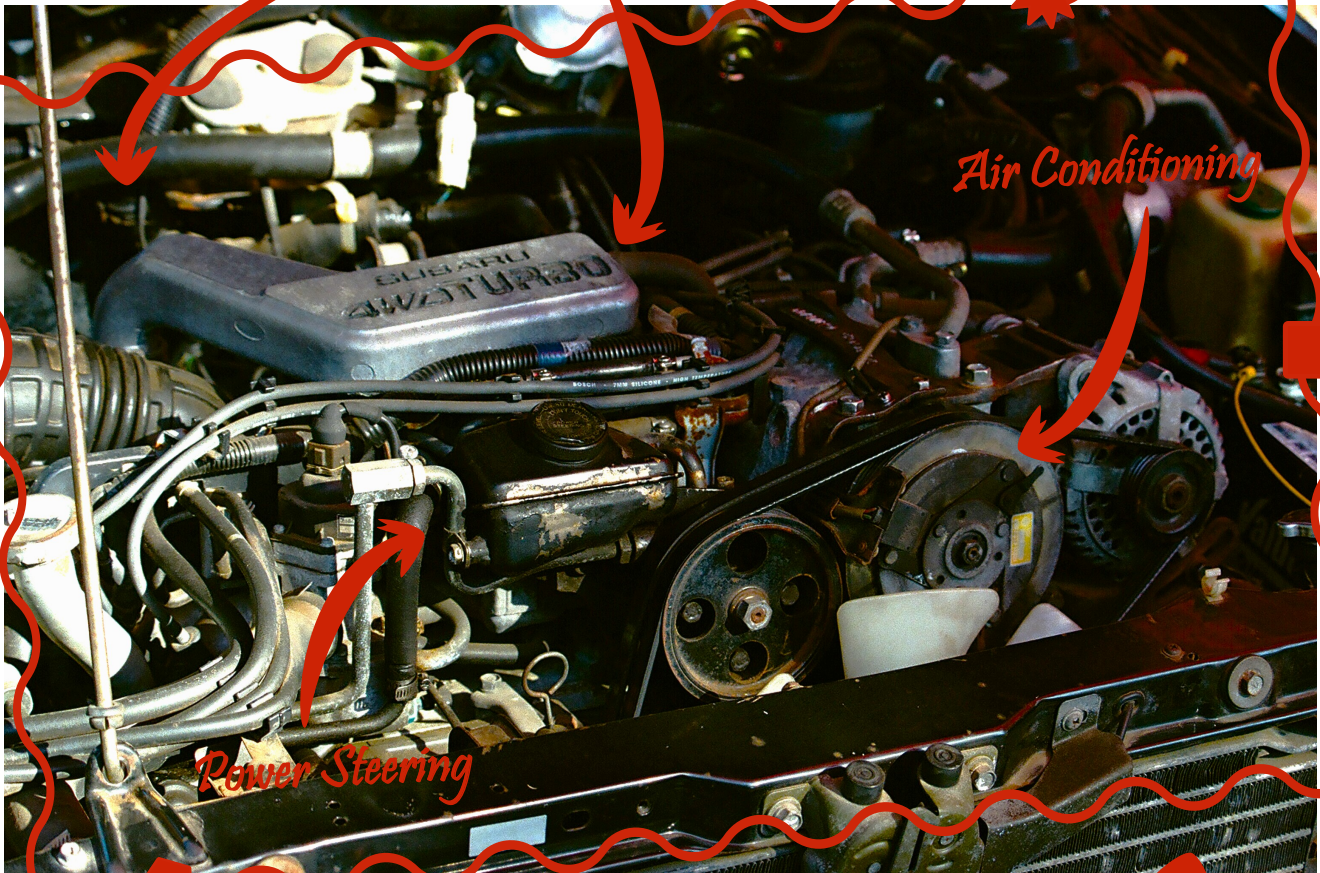
## TRANSMISSION

Subaru SMT (5-Speed) Manual Transmission

Factory Clutch - Cable

"On-Demand" Electronic control 4WD (High Range Only)

*Turbo!!*  
*(Somewhere down there)*



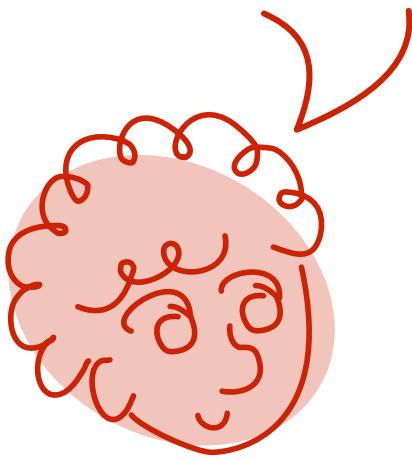
*Air Conditioning*

*Power Steering*

*Busted Up Radiator*

## WHAT DO YOU THINK ABOUT THE CAR?

I've owned 3 XTs in my time including this one. Aurora was the first to start this XT obsession, but she never got off the ground. Borealis was next on the list, and she drove but, never got the point of being an actual car. But when I saw poor Andromeda sitting on that parking lot, I don't know why but she just, spoke to me. Something about it make it seem worth my while. It was a risk for sure, the owner said it was the ECU but who knows what was really the problem. I knew she was the one when I was driving the Uhaul away, and I watched the headlights blink at me. Now, I knew that this was a fault connection, which has been fixed, but I saw that as a sign. That she wanted to be fixed. And I can proudly say that she is at least, part of the way there now. She has a long way to go before she's perfect. But I am gonna do right by her. It's what she deserves.



# この車は素晴らしい



Well... I won't lie. It's not the brightest bulb of the bunch, and not exactly the world's greatest mechanic. Dude broke my damn leg trying to put in a strut, and refuses to properly clean out the gas tank. You know at god knows how long of sitting in that drive way, I think I was finally ready. My good times were good, I'd seen a lot of places, met a lot of people, and then that was it. Then some, overly excited kid comes, removes me from my hard earned moss, and expects me to do 80 miles down I-5 for 2 weeks straight while the roomie is at the doctor. And as annoying as it was at first, it really reminded me of what it was like. I think I'd forgotten over the past decade. The wind, and the country roads, the tunes. He really gave enough of a crap to get some poor wreck back on the road again. I do appreciate that.

## WHAT DO YOU THINK ABOUT THE DRIVER?



## 読んでいただきありがとうございます

### Message from the Editor:

Thank you for reading this Zine!

I hope you enjoyed reading and looking at the pretty pictures! This was honestly more of an excuse to show of my photography than to be a cohesive article about the car. Some of the information in here may be either partially incorrect or incomplete, but I tried to get it mostly right. I hope to do a few more of these, with photos I've taken of my other car, Constance, a 1988 Subaru GL, and of some of my friends cars. Please look out for those too! Thanks again!